

Summary of Input – First Community Survey

Lone Tree Elevated: Lone Tree Comprehensive Plan 2045

The first survey for Lone Tree Elevated was available from early August through mid October and received 533 completed surveys. The survey was available online via the project website (www.lonetreeelevated.com). The project team also conducted in-person outreach with paper surveys at the Backyard Eats and Southern Beats festival on August 12th, the Craftoberfest on October 7th, and the Schweiger Ranch Fall Festival on October 8th. The team conducted in-person outreach at the Lone Tree Brewing Company on two occasions and the City of Lone Tree distributed information about the survey through its publicity channels. The City also posted information about the survey at the Lone Tree Arts Center and through table tents at local restaurants and destinations, to spread the word about the survey.

The following provides highlights of the takeaways and results from the first community survey and it also identifies some areas of alignment between the results from the survey and takeaways from discussions with stakeholder groups in Lone Tree, conducted over the last few months. It also includes some selected quotes from the comments made by individuals responding to survey questions.

Question 1: Which of the following best describes you?

The intent of the first question in the survey was to gather information on the background of individuals completing the survey. The majority of respondents (71 percent) live in Lone Tree, while 33 percent visit Lone Tree to access the community's amenities, including shopping, dining, parks and open space, and trails. A total of 99 of the 533 people completing the survey indicated that they use public services in the City of Lone Tree, and 84 indicated that they work in Lone Tree. The respondents also included 43 individuals who have kids going to school in Lone Tree, 23 employees of the City of Lone Tree, and 15 business owners in Lone Tree.

In terms of additional information provided by respondents to this question, four indicated they lived in Acres Green (which is not a part of the City of Lone Tree). Others indicated that friends or members of their family live in Lone Tree, that they volunteer in Lone Tree, that they work for the Douglas County government, or that they live in Highlands Ranch or other unincorporated portions of Douglas County.

Question 2: How would you describe your perceptions of Lone Tree today? (Please choose all that apply.)

As illustrated in the table of results that follows, the top three responses to this question noted that Lone Tree is “a hub for business, shopping, and entertainment in the south metro area”, “a growing community of great neighborhoods”, or “a hub for healthcare and other public services in the south metro area”. Respondents were less likely to view Lone Tree as a leading city or regional leader in the Denver metro area.

Summary of Input – First Community Survey

Lone Tree Elevated: Lone Tree Comprehensive Plan 2045

Question 2 - How would you describe your perceptions of Lone Tree today? (Please choose all that apply.)	Total Responses
A hub for business, shopping, and entertainment in the south metro area	328
A growing community of great neighborhoods	276
A hub for healthcare and other public services in the south metro area	222
A hub for culture and the arts in the south metro area	146
A bedroom community for the broader Denver metro area	140
A community for recreation in the southern Denver metro area	126
A leading city / regional leader in the Denver metro area	96
Other	46

Comments provided for the “other” option for this question included the following as common themes:

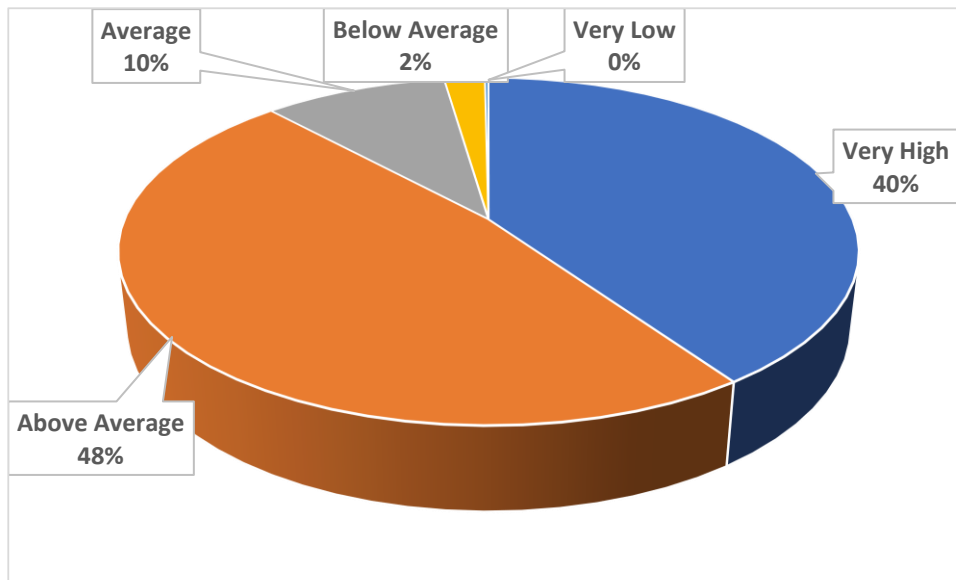
- A sprawling city that “has no soul” and “you can’t tell where Lone Tree city limits start and end”.
- Too dense with too many apartments
- In need of more entertainment and restaurants
- Too crowded, too much housing
- A growing city with good amenities
- A hub for shopping but it needs more culture
- A clean, very nice place to live.
- A “high density Denver suburb”

Summary of Input – First Community Survey

Lone Tree Elevated: Lone Tree Comprehensive Plan 2045

Question 3: How would you rate the quality of life you experience in Lone Tree? (Please choose one)

The following pie chart highlights the results from this question. Around 88 percent of respondents ranked the current quality of life in Lone Tree as “very high” or “above average”. Around 10 percent indicated that the city has an “average” quality of life, and only around two percent assigned a rating of “below average” or “very low”.



The survey provided space for respondents to elaborate or explain the rating they assigned for Lone Tree’s quality of life. The comments received reflected the following as common themes:

- Lone Tree is safe, convenient, and well maintained, and has lots of great amenities.
- The community has lots of great open space and recreation.
- A desire for more entertainment and restaurants
- Concern about the level of development in recent years, including the density of residential development.
- A desire for a real downtown or Main Street.
- “Lone Tree has a small town atmosphere with all the benefits of a larger urban community”
- Lone Tree is great for families, clean and neat.
- The community is very car-centric.
- An undercurrent that the quality of life may have declined in recent years with too much development and homelessness concerns.
- “So great for families but could use better food and entertainment options”
- Overall, a high quality of life.

Summary of Input – First Community Survey

Lone Tree Elevated: Lone Tree Comprehensive Plan 2045

Question 4 – What makes you want to live in Lone Tree? Which of the following quality of life factors are (or would be) the most important to your decision on whether to live in Lone Tree? (Please choose three.)

As outlined in the table that follows, respondents cited “safety and security”, “the quality of your neighborhood”, “community appearance”, and “access to major thoroughfares” as the top four factors for why they would want to live in Lone Tree. Factors including youth programs and activities, the overall cost of living, support from family and friends, and access to job opportunities were less likely to be cited as factors for wanting to live in the city.

Question 4 - What makes you want to live in Lone Tree? Which of the following quality of life factors are (or would be) the most important to your decision on whether to live in Lone Tree? (Please choose three)	Total Responses
Safety and security	319
The quality of your neighborhood	270
Community appearance	197
Access to major thoroughfares	192
Shopping options in Lone Tree	177
Access to and quality of services (medical care, social and government services, etc.)	167
Access to recreational activities in Lone Tree	153
Quality of local schools	130
Art and cultural activities in Lone Tree	113
Access to transit (buses or light rail)	110
Quality, cost and availability of housing	100
Access to and quality of public services	67
Access to job opportunities in the region	59
Community support (from family and friends)	49
Overall cost of living	48
Youth programs and activities	43
Other	37
N/A	29

In addition, respondents were allowed to elaborate, in written comments, regarding what they meant by “other” in their response to the question. The comments received indicated the following as common themes of the “other” answers to this question.

- Access to the Bluffs and walking and biking trails
- Access to open space
- Access to shopping and services
- Great location
- Access to family and friends and other communities / cities in the area.

Summary of Input – First Community Survey

Lone Tree Elevated: Lone Tree Comprehensive Plan 2045

Question 5 – If you work in Lone Tree, which of the following would improve your employment situation? (Please choose all that apply.)

From an economic development perspective, Lone Tree Elevated will explore how to make the community more marketable or attractive to prospective employees. Question 5 asked respondents to note which factors in Lone Tree would improve their employment situation. Around half of all respondents indicated “not applicable”, likely indicating that they do not work in Lone Tree. Respondents indicated that having more places to eat and enjoy entertainment, more places to run, hike, bike and recreate, and more affordable choices for housing in Lone Tree would enhance their employment situation.

Question 5 - If you work in Lone Tree, which of the following would improve your employment situation? (Please choose all that apply.)	Total Responses
Not applicable (N/A)	258
Having more places to eat and enjoy entertainment after my day of work.	107
Having more places to run, hike, bike, and recreate near my place of employment	73
Having more affordable choices for housing available near my place of work	69
Having more places to conduct daily errands near my place of employment	52
Having more housing options (in general) available near my place of employment, to reduce my commute to Lone Tree	35
Having better transit and mobility options that allow me to travel to work from the light rail stations in Lone Tree	35
Having better transit and mobility options (besides light rail) that allow me to travel to Lone Tree from another community in the area.	32
Other (compensation, role of my job, career factors, etc.)	31
Having better access to nearby public services (such as schools and child care options).	23

Respondents also provided written comments regarding the “other” choice from this question. The following highlight some common themes from these comments:

- Need more local, small business, or mom-and-pop restaurants and businesses
- Having less traffic, better traffic management, and safer bike routes to work would improve the situation.
- Several respondents indicated that they work from home.

Summary of Input – First Community Survey

Lone Tree Elevated: Lone Tree Comprehensive Plan 2045

Question 6 – Do you feel that Lone Tree has enough housing options for people wanting to live in the community? Please choose one.

The results from this question were mixed, with **41 percent of respondents choosing “yes”, 32 percent indicating “no”, and 27 percent indicating “I don’t know”.**

The following highlights common themes from additional comments provided by respondents for Question 6:

- No more housing. Stop the building.
- Housing is too expensive. There isn't any affordable housing.
- There are many high priced, larger, and exclusive homes, and lots of apartments, but Lone Tree is missing housing in the middle. It needs more smaller sized, single family homes and more apartments and condominiums.
- Too much high density housing (apartments)
- Lone Tree needs more single-level and patio homes.
- “I would love to see development of some quality townhomes to downsize to...especially designed for empty-nesters, who love this area.”
- Need more housing for seniors, including an affordable senior neighborhood or condominium complex.
- “Lone Tree has a lot of luxury or custom style homes, and does not have any starter home type products, which means it's impossible for some to transition from renting in Lone Tree to buying in Lone Tree, and leads people to buy elsewhere.”

These comments and the data align with feedback from Denver South, as part of stakeholder meetings, which indicated that the cost of housing has emerged as a major economic development challenge for the region. Providing a range of housing would likely benefit the efforts of the city, and the broader southeast part of the Denver metro area, in attracting and retaining employers.

Summary of Input – First Community Survey

Lone Tree Elevated: Lone Tree Comprehensive Plan 2045

Question 7 – Which types of individuals or households do you believe are most in need of housing? (Please choose all that apply).

Respondents indicated, as outlined in the table that follows, that teachers and first responders, young adults, households with children, and older adults or seniors were most in need of housing in Lone Tree.

Question 7 - Which types of individuals or households do you believe are most in need of housing? (Please choose all that apply.)	Total Responses
Teachers / first responders and similar essential workers	219
Young adults	213
Households with children	197
Older adults / seniors	159
Single person households	136
Service industry employees	121
Technical / skilled trades employees	93
Professional services or management employees	71
Other	42

Respondents had the opportunity to provide additional comments or elaborate on their choice of “other” as an answer to Question 7. The following highlight some common themes from these comments.

- No more housing needed.
- Affordable housing for various types of households
- Lone Tree is an exclusive community. “Developments should be built with quality in mind and whoever is able to live there should live there”.
- We already have many apartments, and instead need more condominiums.
- All of the above.

Feedback from Denver South ran counter to some of the sentiment in Question 7. Denver South indicates that the affordability of housing is impacting the ability of employers to attract a full range of prospective employees (not just teachers or first responders).

Summary of Input – First Community Survey

Lone Tree Elevated: Lone Tree Comprehensive Plan 2045

Question 8 – With the understanding that Lone Tree Elevated is a long term plan for the community, and many aspects of the city won't change overnight, what is your opinion of Lone Tree's retail and shopping options today? For each option, please answer from the following choices:

- Have too much
- Have enough
- Need more
- Not sure
- I don't want any of this option in Lone Tree

Question 8 - With the understanding that Lone Tree Elevated is a long term plan for the community, and many aspects of the city won't change overnight, what is your opinion of Lone Tree's retail and shopping options today? For each option, please answer from the following choices: Have Too Much, Have Enough, Need More, Not Sure, or I don't want any of this option in Lone Tree					
	Have Too Much	Have Enough	Need More	Not Sure	I don't want any of this option in Lone Tree
Indoor entertainment options, such as movie theaters, axe throwing, or bowling alleys	1.3%	38.4%	52.3%	6.5%	1.5%
Outdoor entertainment options, such as ice skating, corn hole, golfing, or other outdoor games	0.6%	32.4%	57.3%	8.1%	1.7%
Small, locally owned retail shops	0.6%	15.5%	76.1%	7.1%	0.8%
Bars / night life	1.5%	38.9%	42.9%	9.5%	7.2%
Sit down restaurants (non-fast food)	1.0%	33.0%	61.9%	4.1%	0.2%
Fast food restaurants with drive-thrus	13.6%	57.4%	18.2%	5.7%	5.2%
Fast casual restaurants	5.5%	54.1%	33.3%	6.1%	1.0%
Big box stores	12.6%	69.5%	6.6%	6.6%	4.8%
Food co-ops or similar, smaller grocery stores	1.0%	28.5%	55.2%	11.9%	3.5%
Traditional grocery stores	2.3%	56.9%	33.3%	6.9%	0.6%
Public markets or farmers markets	0.6%	14.7%	75.6%	7.8%	1.3%
Food halls or multi-tenant restaurant venues	1.5%	19.5%	50.4%	17.6%	11.1%
Other box or chain stores	10.4%	56.5%	7.5%	16.4%	9.2%
Personal services	2.5%	53.2%	22.6%	21.1%	0.6%
Fitness, yoga, or other health studios	3.9%	51.7%	27.2%	16.4%	0.8%

As illustrated in the yellow shaded boxes, in the table above, respondents indicated a definitive desire to have more of the majority of categories of retail, shopping, and entertainment listed in Question 8. However, respondents indicated that Lone Tree has enough of the following categories of retail or services:

- Fast food restaurants with drive-thrus
- Fast casual restaurants
- Big box stores
- Traditional grocery stores
- Other box or chain stores

Summary of Input – First Community Survey

Lone Tree Elevated: Lone Tree Comprehensive Plan 2045

- Personal services
- Fitness, yoga, or other health studios

Respondents highlighted the following, as predominant answers, in open comments, regarding the types of stores and services (outside of medical services) they would like to see in Lone Tree.

- Live music venues
- Small businesses and locally based businesses
- “We need restaurants. We need fast food with drive through. Maybe the Lone Tree motto should be ‘where restaurants come to die’.”
- More activities for people *without* kids
- Independent coffee shops
- Movie theater and music venues
- “Gathering hubs where people truly come together as neighbors to meet, eat, shop, care for one another. An exciting ‘place to be’ in our community”.
- “Would like more community focused development that offers walking corridors like Cherry Creek.”
- More indoor and outdoor entertainment
- “We are in dire need of market style food options. Whether that’s a natural grocers, farmers market, smaller boutique grocer, I have to travel to other municipalities for this.”
- Cafes with outdoor seating, and pedestrian zones with shops and cafes
- Avoid having chain stores
- Lone Tree needs a true downtown.

Question 9 – Of the following, which THREE are the top parks or recreational amenities that you like in the Lone Tree area?

Respondents noted the Lone Tree Recreation Center, natural and open space lands such as the bluffs, and walking or biking paths (paved) as their top choices. Significant numbers of respondents also noted walking or biking paths (unpaved), golfing facilities, and the Cook Creek Pool as amenities they like in Lone Tree.

In terms of “other” amenities they like in Lone Tree, respondents cited dog parks, Schweiger Ranch, the Lone Tree Arts Center, and free outdoor recreation options (such as the bluffs).

Summary of Input – First Community Survey

Lone Tree Elevated: Lone Tree Comprehensive Plan 2045

Question 10 – The City is currently working on plans to improve the I-25 and Lincoln Avenue interchange and other improvements. How can the City build upon this and other previous transportation planning efforts? How important are the following, for planning for transportation accessibility and mobility in Lone Tree? For each option, choose a number from 1 to 5, with 1 meaning “very important” to 5 meaning “not important”.

The following table summarizes the responses in the survey to Question 10.

Question 10 - The City is currently working on plans to improve the I-25 and Lincoln Avenue interchange and other improvements. How can the City build upon this and other previous transportation planning efforts? How important are the following items, for planning for transportation accessibility and mobility in Lone Tree? (For each option, choose a number from 1 to 5, with 1 meaning "very important" to 5 meaning "not important")					
	1 - Very Important	2	3	4	5- Not Important
Management of traffic flow on major roads	73.7%	15.6%	6.0%	2.5%	2.1%
Ease of travel on local or neighborhood streets	46.1%	26.5%	19.8%	4.3%	3.3%
Improving the usability of light rail transit	25.3%	19.5%	23.1%	14.7%	17.3%
Providing transit connections from light rail stations to places of employment and different neighborhoods around town	25.5%	19.0%	24.0%	12.3%	19.2%
Improving transit connections from Lone Tree to neighboring communities (Centennial, Highlands Ranch, Parker, etc.)	22.3%	18.8%	25.9%	16.8%	16.2%
Completing the network of walking path throughout Lone Tree	50.8%	24.0%	16.9%	5.3%	3.0%
Completing the network of bikeways throughout Lone Tree	39.3%	21.6%	22.0%	9.2%	8.0%
Having sufficient access to community destinations (in terms of parking and connections from local neighborhoods)	27.5%	25.5%	34.5%	7.4%	5.2%
Improving facilities for bicyclists (such as bike parking, bike lanes, bike trails, etc.)	29.3%	22.6%	22.8%	15.2%	10.2%

Respondents generally view most of the items listed as “very important” for planning for transportation accessibility and mobility in Lone Tree in the future. However, a plurality of respondents ranked two of the items as a “3” (neither important, nor not important):

- Improving transit connections from Lone Tree to neighboring communities (Centennial, Highlands Ranch, Parker, etc.)
- Having sufficient access to community destinations (in terms of parking and connections from local neighborhoods)

In addition, respondents provided some additional comments regarding other items of importance for transportation planning. The following summarizes some common or notable comments from the survey, on Question 10:

Summary of Input – First Community Survey

Lone Tree Elevated: Lone Tree Comprehensive Plan 2045

- Concern about bicycle safety and a desire for more protected bike lanes or for the use of sidewalk areas for bicycle travel around Lone Tree.
- Several comments about concerns with personal safety on the light rail.
- Desire to have more trails around Lone Tree connect together.
- Desire for increased safety on sidewalk connecting to services like shopping, the library, or the arts center.
- Need to improve access for the disabled so that those with mobility impairments can safely cross streets and reach trails and open space areas.
- Need to plan for micromobility and for electric vehicles.

The desire to explore more options for micromobility aligns with feedback from stakeholder groups, that the community would like to see more options (besides light rail) for local transit services.

Question 11 – How important are the following items, for planning for economic development in Lone Tree? For each option, choose a number from 1 to 5, with 1 meaning “very important” to 5 meaning “not important”.

Respondents generally rated all of the items listed in the question as “very important” to economic development in Lone Tree, as outlined in the following table.

Question 11 - How important are the following items for planning for economic development in Lone Tree? (For each option, choose a number from 1 to 5, with 1 meaning "very important" to 5 meaning "not important")					
	1 - Very Important	2	3	4	5- Not Important
Access to educational and training resources in the local area	29.1%	25.0%	26.6%	10.2%	9.2%
Access to health care services	56.6%	26.3%	11.9%	2.8%	2.4%
Having recreational amenities and providing for environmental quality in the area.	55.2%	29.0%	10.7%	2.4%	2.8%
Access to social and cultural resources and amenities.	32.2%	35.4%	22.5%	6.2%	3.8%
Access to information technology resources (such as Broadband, high speed fiber, or the timing of traffic signals)	67.8%	18.2%	10.1%	1.8%	2.2%
Quality of transportation infrastructure (including streets and sidewalks) and access to transportation connections (walking, biking, transit, and vehicular)	58.7%	26.5%	9.9%	3.8%	1.2%

Respondents also provided comments regarding other items desired for economic development efforts. The following highlights notable comments from the survey:

- Would like to see the redevelopment of the Entertainment District with a pedestrian friendly focus.
- Need to have trails designed so that they are removed from vehicular traffic.
- Desire for improved high-speed Internet or broadband service in Lone Tree.

Summary of Input – First Community Survey

Lone Tree Elevated: Lone Tree Comprehensive Plan 2045

- Focus transportation on the needs of bicyclists, pedestrians and transit, as opposed to focusing on developing wide, auto-centric corridors.

Question 12 – How important are the following items, in terms of expanding or enhancing arts and culture in Lone Tree? For each option, choose a number from 1 to 5, with 1 meaning “very important” to 5 meaning “not important”.

Respondents generally believe the items listed are important for enhancing arts and culture in the city, as outlined in the table below. However, a plurality of respondents assigned a rating of “3” (meaning neither important, or not important) for the strategy of improving or expanding public facilities for the arts (such as the Lone Tree Arts Center). This input runs counter to feedback from Lone Tree Arts Center staff, which would greatly appreciate upgrades to the facility.

Question 12 - How important are the following items, in terms of expanding or enhancing arts and culture in Lone Tree? (For each option, choose a number from 1 to 5, with 1 meaning "very important" to 5 meaning "not important")					
	1 - Very Important	2	3	4	5- Not Important
Having a wider range and greater number of arts and culture events in Lone Tree (e.g., concerts, arts exhibits, etc.)	27.3%	36.1%	22.0%	8.0%	6.7%
Enhancing or expanding classes and programs for arts and culture in Lone Tree (e.g., art classes, senior programs, children's programs, etc.)	22.8%	31.3%	29.7%	9.1%	7.1%
Improving or expanding public facilities for the arts (such as the Lone Tree Arts Center)	20.6%	28.3%	30.0%	12.3%	8.9%
Improving or expanding cultural resources in Lone Tree (such as cultural markers, music events, and related forums)	27.4%	33.0%	24.1%	8.4%	7.2%
Public art within the community	17.2%	25.4%	27.9%	15.6%	13.9%

Respondents also provided comments regarding other items desired for arts and culture in Lone Tree. The following highlights notable comments from the survey:

- We need a greater level of variety of productions and programs at Lone Tree Arts Center that appeal to younger audiences, and not just older adults or the elderly.
- Events at the Lone Tree Arts Center are way too expensive. Need more affordable options.
- The arts in Lone Tree should reflect a greater level of cultural diversity.
- Classes in arts are lacking in Lone Tree. Unable to take a painting, photography, or drawing class in Lone Tree right now.
- The range of arts and cultural events is already pretty good. The Lone Tree Arts Center is already perfect and nice.
- One respondent noted they are more likely to visit Denver to see a play or a musician, and believes Lone Tree should focus on the types of events in which it can excel, including street fairs, performances by local musicians, arts and culture at a farmers market, etc.

Summary of Input – First Community Survey

Lone Tree Elevated: Lone Tree Comprehensive Plan 2045

Question 13 – How important are the following items, in planning for sustainability and resiliency in Lone Tree? For each option, choose a number from 1 to 5, with 1 meaning “very important” to 5 meaning “not important”.

Respondents to the survey largely ranked all of these items as “very important” or “important” with a plurality of respondents giving all options a ranking of “1” or “2”.

Question 13 - How important are the following items, in terms of planning for sustainability and resiliency in Lone Tree? (For each option, choose a number from 1 to 5, with 1 meaning "very important" to 5 meaning "not important")					
	1 - Very Important	2	3	4	5- Not Important
Energy conservation and efficiency	51.3%	27.1%	13.4%	4.3%	3.9%
Water conservation	64.2%	22.1%	9.5%	2.8%	1.6%
Recycling	52.4%	23.9%	15.9%	3.4%	4.4%
Composting	27.3%	25.6%	24.8%	12.9%	9.4%
Reducing the number of vehicle miles traveled in Lone Tree	22.5%	30.1%	26.5%	10.6%	10.4%
Diversifying the mix of revenue sources used by the City of Lone Tree	27.3%	35.8%	27.7%	5.1%	4.1%
Wildlife habitat preservation	46.9%	25.8%	16.7%	6.7%	3.9%
Wildfire mitigation	53.9%	25.8%	13.2%	5.1%	2.0%
Emergency preparedness efforts (for fires, floods, summer storms, and winter weather events)	58.0%	26.8%	11.6%	2.4%	1.2%

Respondents also provided comments regarding other items desired for sustainability and resiliency in Lone Tree. The following highlights notable comments from the survey:

- Focus on reducing the use of irrigated grass (including on city rights of way) and instead switch to xeriscaping.
- The city should make sure it has storm sirens and plans for wildfires.
- The city should have a balanced and reasonable approach to energy use.
- Lone Tree already does a good job of emergency preparedness and response.

Lone Tree Elevated: Lone Tree Comprehensive Plan 2045

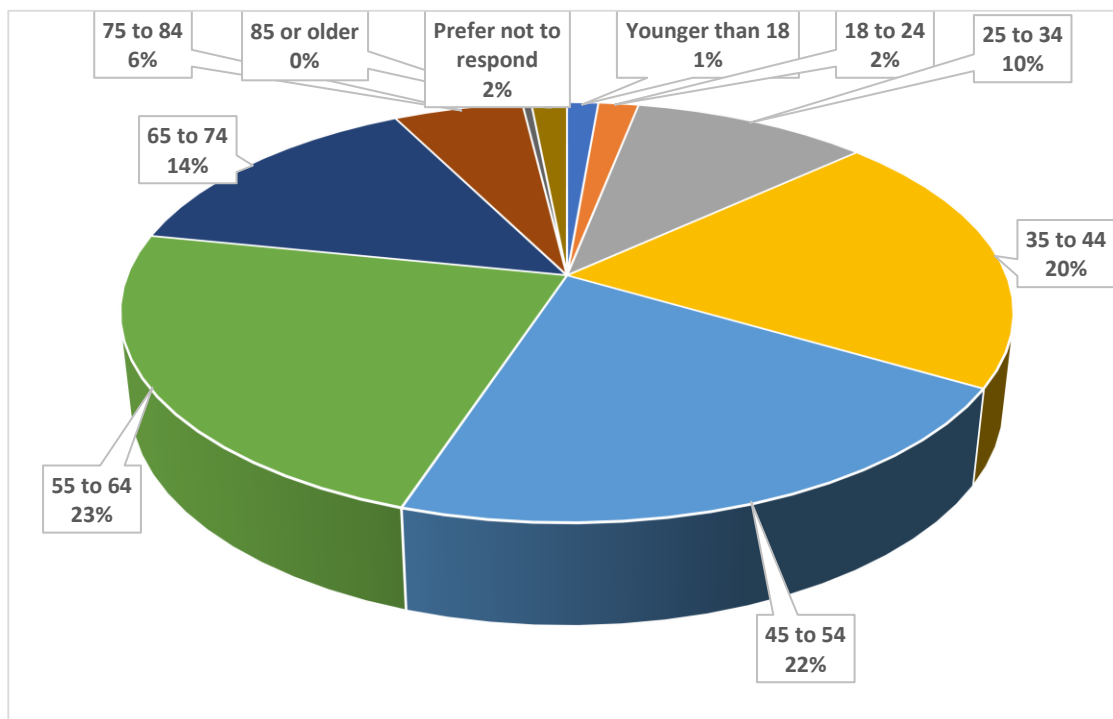
Summary of Input – First Community Survey

Lone Tree Elevated: Lone Tree Comprehensive Plan 2045

- Use the parks for music and celebrations.
- Focus on making housing more affordable.
- Expand and improve parks and trails and continue to emphasize the connections to open space as calling cards of Lone Tree.
- Lone Tree can serve as an outdoor activity hub.
- Focus on walkability and safety.
- Continue to emphasize arts and culture, and Lone Tree can serve as a cultural hub
- Lone Tree should be more vibrant in the evening and less vanilla.
- Create more mixed use areas and implement a great vision for the Entertainment District.
- Emphasize nature and places to gather
- Make sure Lone Tree is fully bikeable
- Emphasize sustainability, resiliency, and connectivity in a safe environment.

Question 15 – What is your age?

As highlighted in the following pie chart, adults in the 35 to 65 age range represent the vast majority of respondents to the first community survey. Youth under age 24 represented a very small fraction of respondents, as did adults over the age of 75.

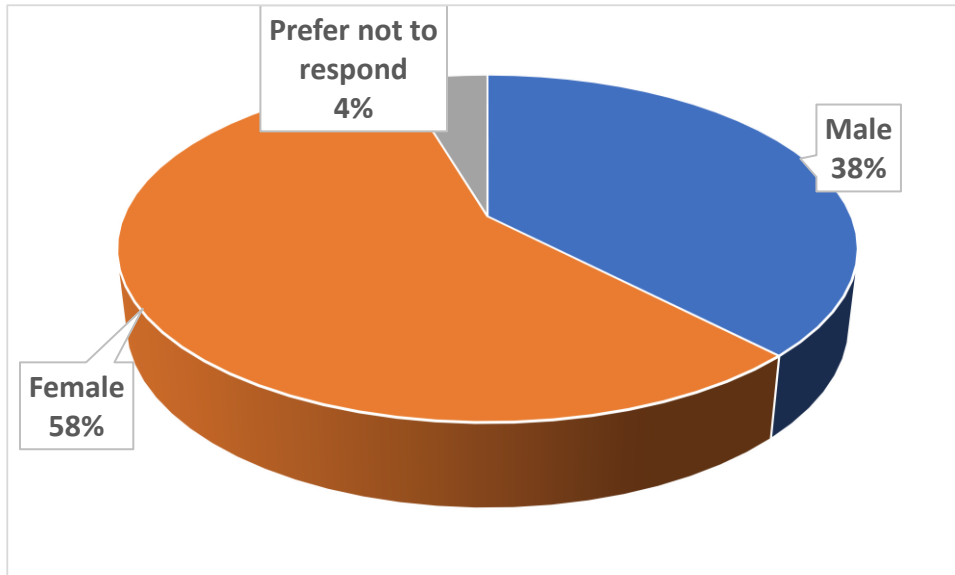


Summary of Input – First Community Survey

Lone Tree Elevated: Lone Tree Comprehensive Plan 2045

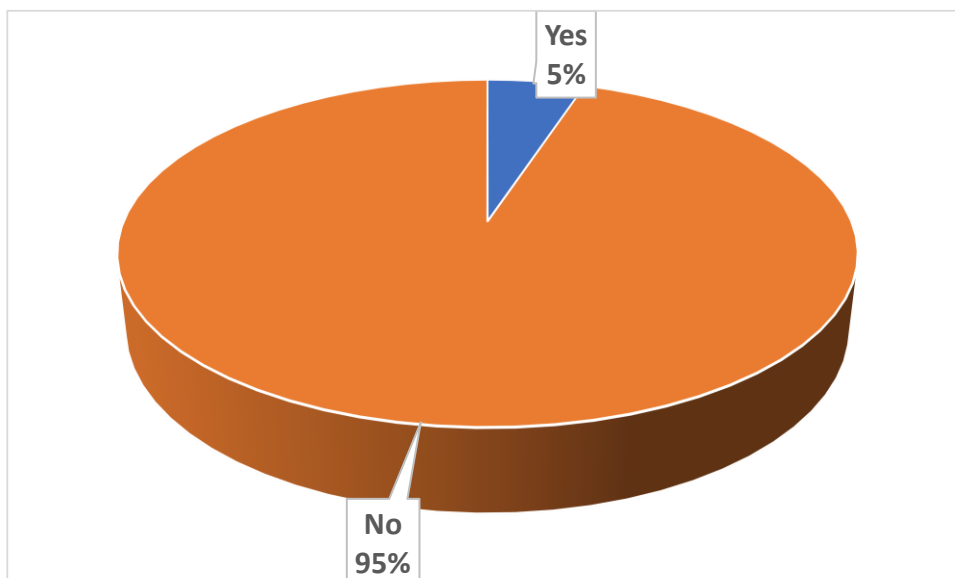
Question 16 – What is your gender?

Females represented the majority (58 percent) of respondents to the first community survey.



Question 17 – Are you of Hispanic / Latino / Spanish origin?

Individuals of Hispanic or Latino origin represented only around five percent of respondents to the first community survey. In contrast, persons of Hispanic, Latino, or Spanish origin represented around nine percent of the City's population in 2023.

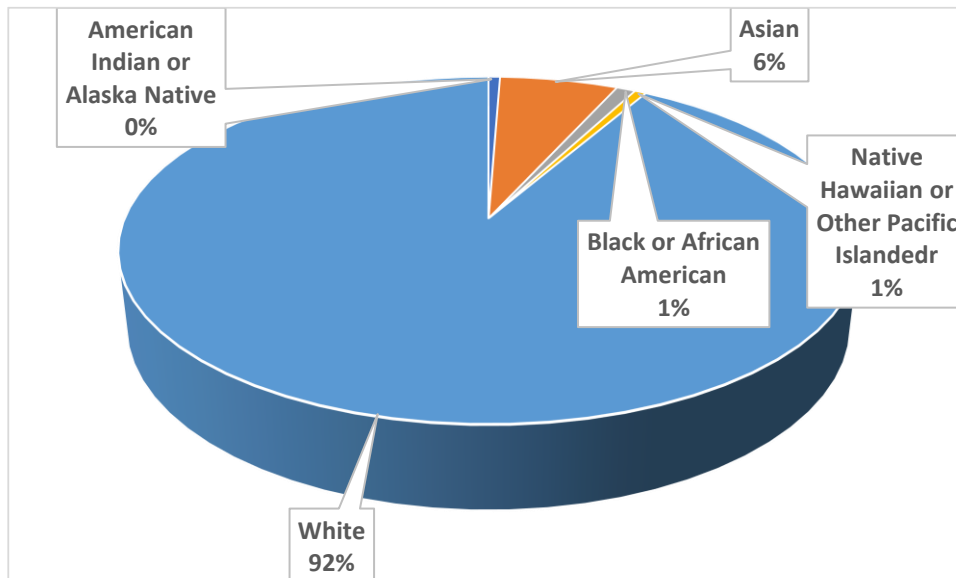


Summary of Input – First Community Survey

Lone Tree Elevated: Lone Tree Comprehensive Plan 2045

Question 18 – How would you best describe yourself?

White individuals accounted for over 90 percent of all completed surveys. Asians accounted for six percent of all surveys completed, for the first community survey. In contrast, Asians accounted for around an estimated nine percent of the City's population in 2023.



Question 19 – What other questions, comments, or ideas would you like to share as Lone Tree Elevated moves forward?

This final question in the first community survey provided an open forum for individuals to add any other comments regarding Lone Tree and its plans for the next 20 years. A total of 133 individuals added comments in response to this question. The following captures some of the notable themes or comments received from Question 19.

- Lone Tree should be sustainable, safe, and non-sprawling.
- Need more options for night life and options for youth for activities and entertainment
- Need more local stores and mom and pop operations. Fewer chain stores or companies.
- Lone Tree needs a conference center or meeting rooms.
- Need more options for indoor and outdoor entertainment and gathering spaces such as plazas, outdoor ice rinks and some fun adult options (distillery, tequila bar)
- Stop building so many apartment complexes
- Manage growth carefully to minimize crowding and maintain the quality of life.
- Emphasize walking and biking trails
- An indoor farmers market store would be great, in that it would allow us to shop for locally grown food all year round. It would also be something unique for Lone Tree to have.
- Minimize parking requirements and focus instead on multimodal transportation. This would be a big step toward making the community more accessible and fun to live in.
- Tree should be redeveloped as a food court or music venue.
- Focus on the Entertainment District, as it is an eyesore.
- Promote unique development, not just cookie cutter

Summary of Input – First Community Survey

Lone Tree Elevated: Lone Tree Comprehensive Plan 2045

- Lone Tree needs safe ways to walk to dinner, the rec center, local stores, etc.
- Need additional options for senior living, such as smaller ranches and patio homes
- Need an indoor pool facility to complement Cook.
- Need improved cell phone service, especially important during emergencies (like last summer's tornado)
- Explore having a small college in Lone Tree.
- There has been too much emphasis on bike paths and facilities. The bridge over Lincoln Ave is hardly used.
- Redevelop what we have versus only focusing on the east side of RidgeGate.
- Maintain open spaces for walking and biking. Do not cannibalize it with more housing and development.
- An emphasis on safety and reducing crime is important. Concerns about homelessness and petty crime. Concern about impacts of light rail on crime.
- Lone Tree needs a Main Street or Downtown area.
- Be reasonable with regard to renewable energy. It won't just happen overnight.
- Would like to see an amphitheater and expanded programs at LTAC.
- The City should allow for agricultural animals like chickens, ducks, or goats.
- Continue to support the Lone Tree Arts Center