

Tripp County Master Transportation Plan Public Meeting #1 (Virtual)

April 23, 2024

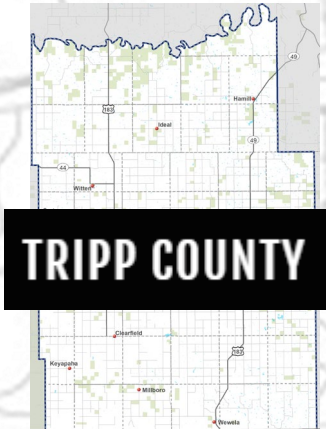
Tripp County MTP Agenda

- Introduction and Background
- Existing Conditions
 - Roads (include Functional Class Roadway Jurisdiction, Surface Type, and Roadway Width)
 - Traffic (Existing Volume to capacity)
 - Crash History
 - Bridge Condition
 - Township Property Tax
 - Key Issues and Needs
- Next Steps:
 - Your Contribution
 - Study Schedule
 - Study Website



Tripp County MTP Study Participants

- Agency Partners: Tripp County, SDDOT, FHWA
- Study Advisory Team: Tripp County, SDDOT, City of Winner
- Consultant: Felsburg Holt & Ullevig with Brosz Engineering, Inc

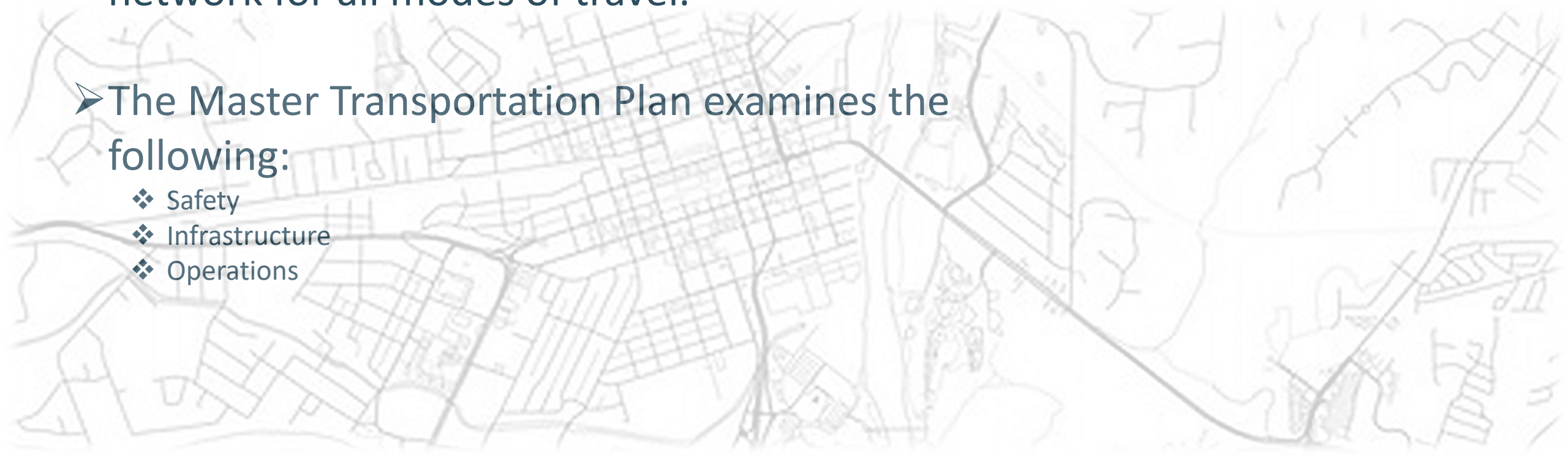


U.S. Department
of Transportation
**Federal Highway
Administration**

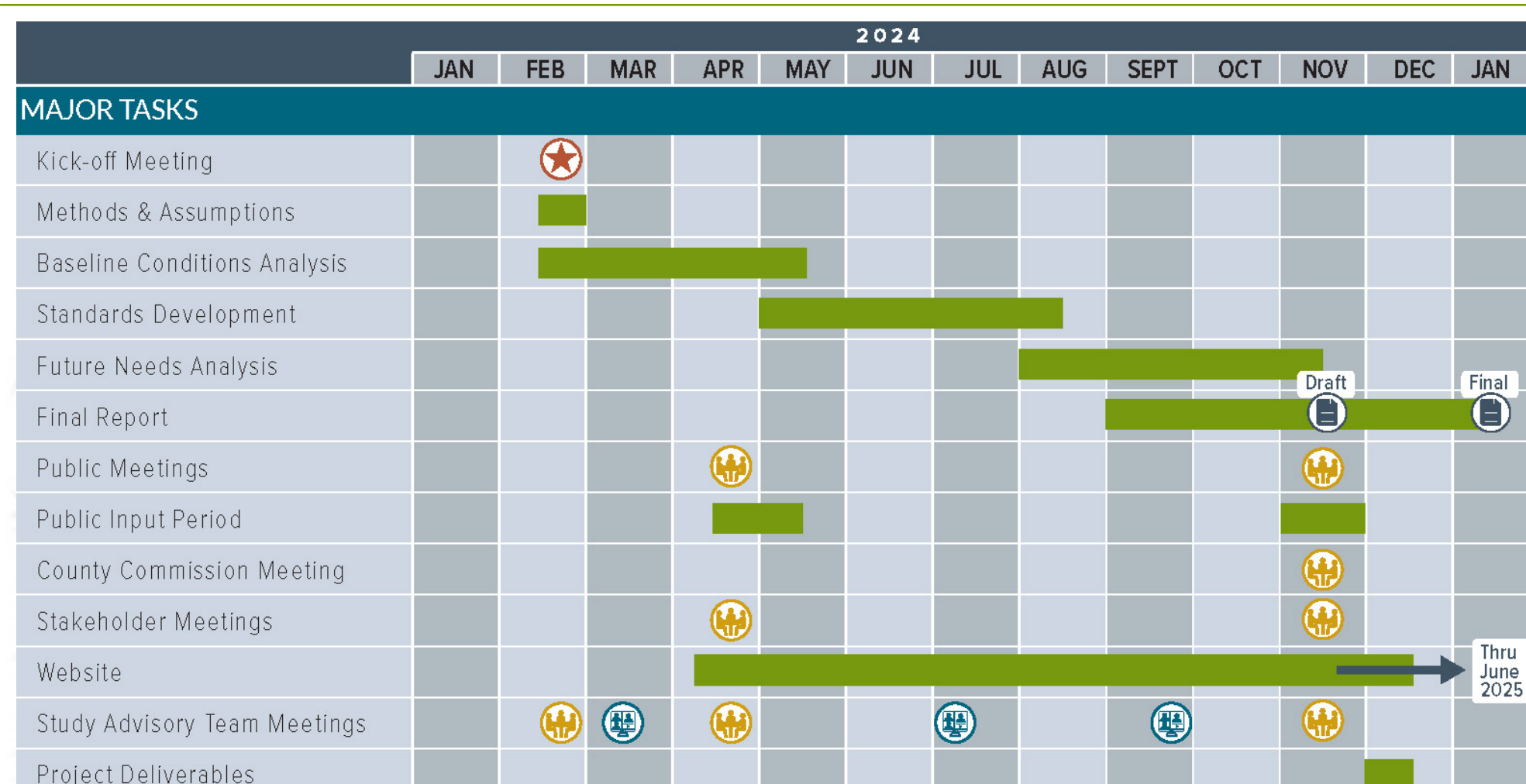


What is a Master Transportation Plan (MTP)?

- A 20 –year planning document that will serve as a guide for the County’s future transportation network for all modes of travel.
- The Master Transportation Plan examines the following:
 - ❖ Safety
 - ❖ Infrastructure
 - ❖ Operations

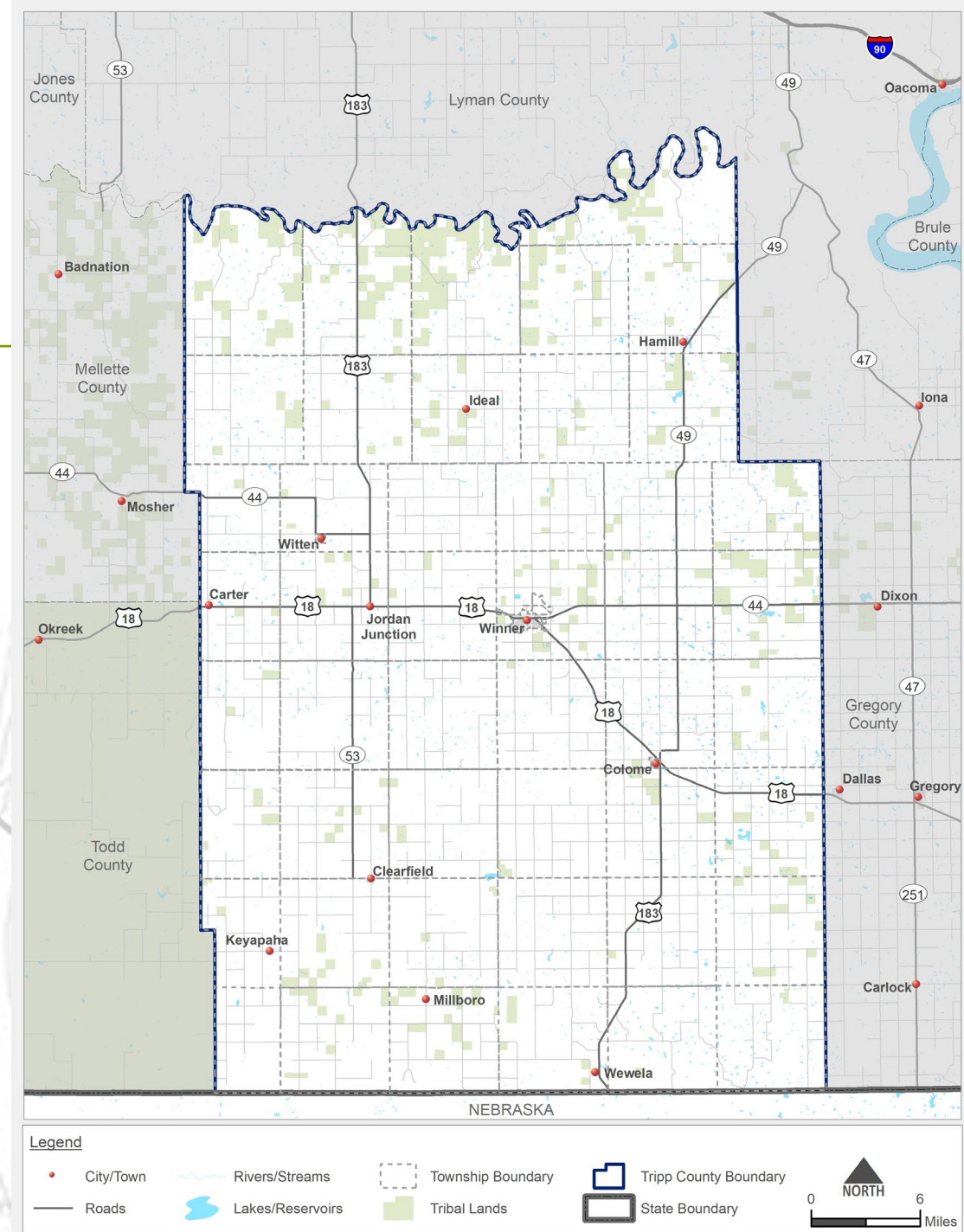
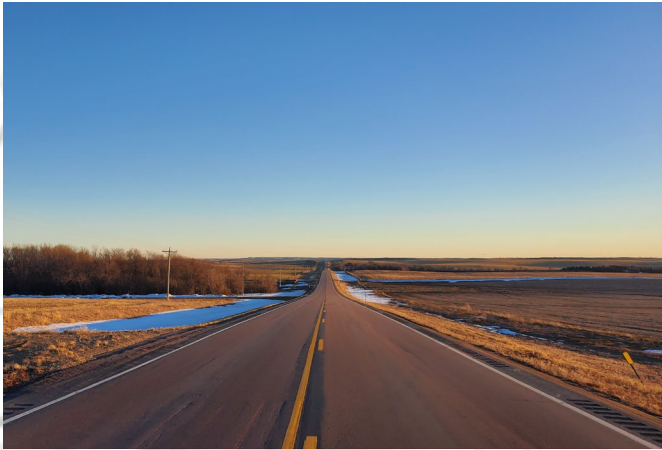


Project Schedule



Tripp County MTP Study Area

- The focus of the MTP WILL BE Tripp County owned and maintained roadways and bridges.



Tripp County MTP

Key Issues and Needs

- Issue important to you and Tripp county?
- Needs important to you and Tripp County ?

Funding Amounts and Sources

Priorities for Roadway Project

Local Funding Generated

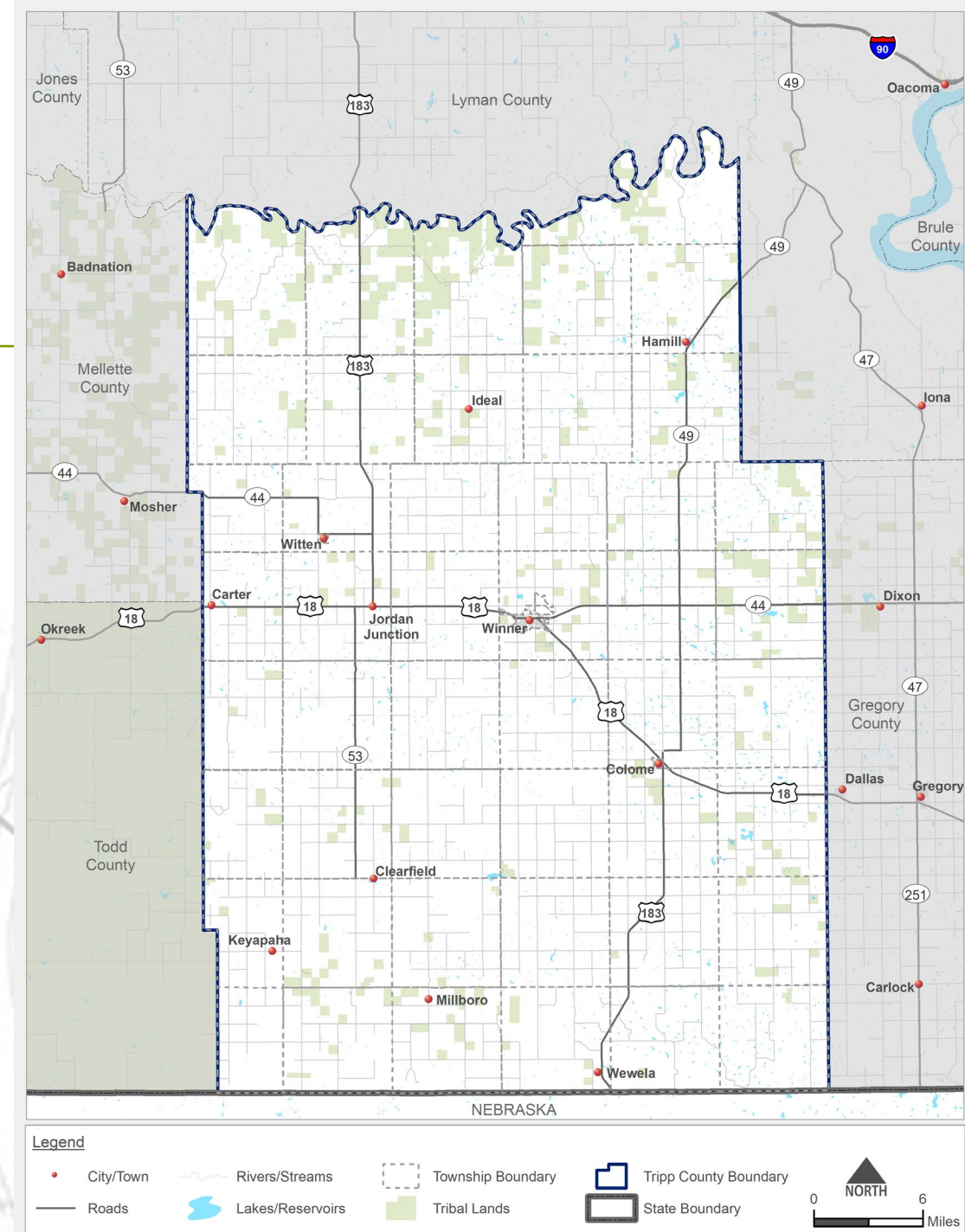
Priorities for Bridge Project

Roadway Standards for Vehicles and Freight

Transportation Safety

Economy and Adaptability to Market Opportunities

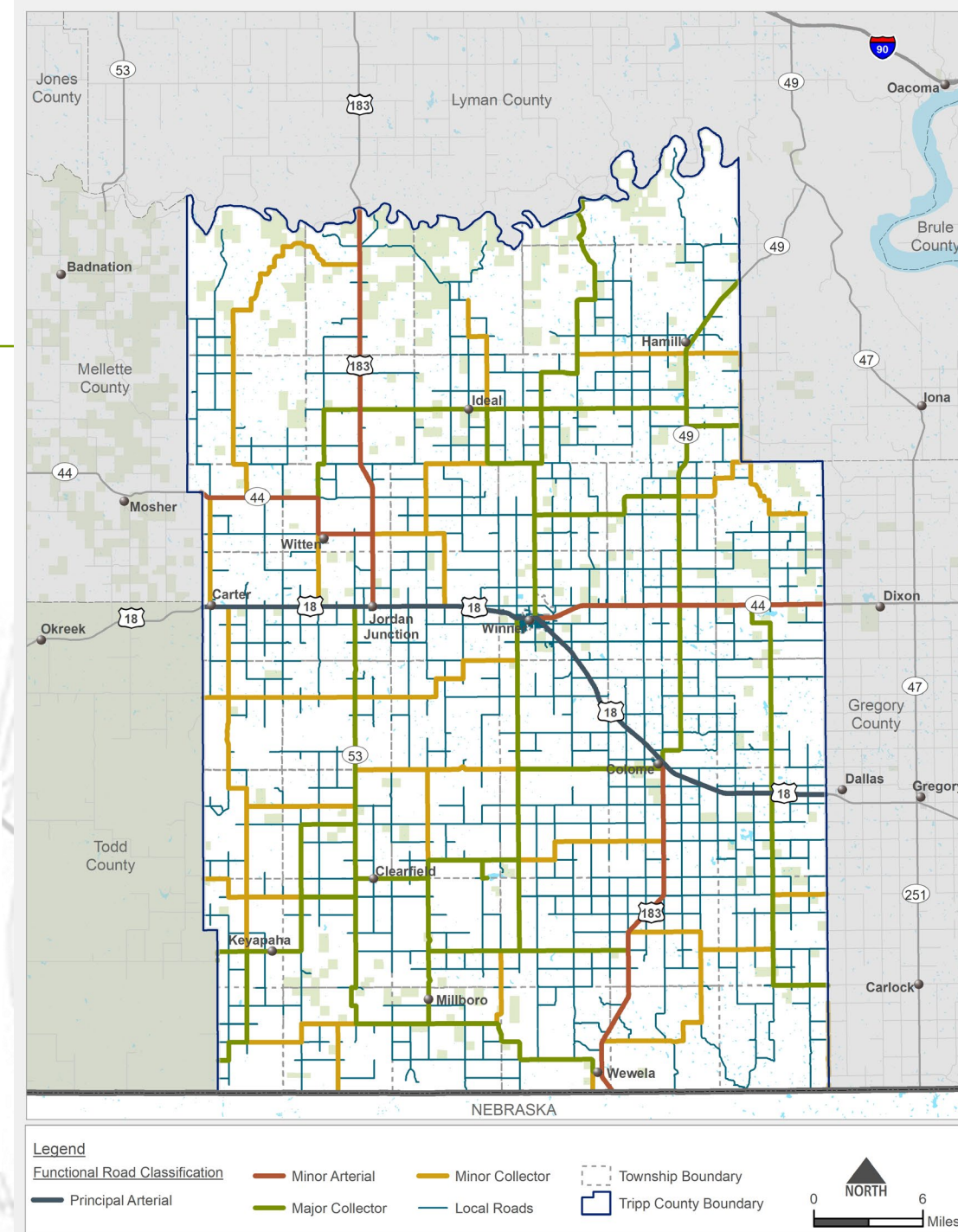
Public Services – Transit, Emergency, Mail



Tripp County MTP Functional Classification

- One (1) Principal Arterial (US 18).
- Four (4) Minor Arterials (State Highways).
- Major and Minor collectors are the second largest number of roads classification after local roads.

Functional Road Classification	Total Lane Miles	Percentage %
Principal Arterials	40	2.1
Minor Arterial	69	3.7
Major Collector	245	13.1
Minor Collector	198	10.5
Local Roads	1,323	70.6

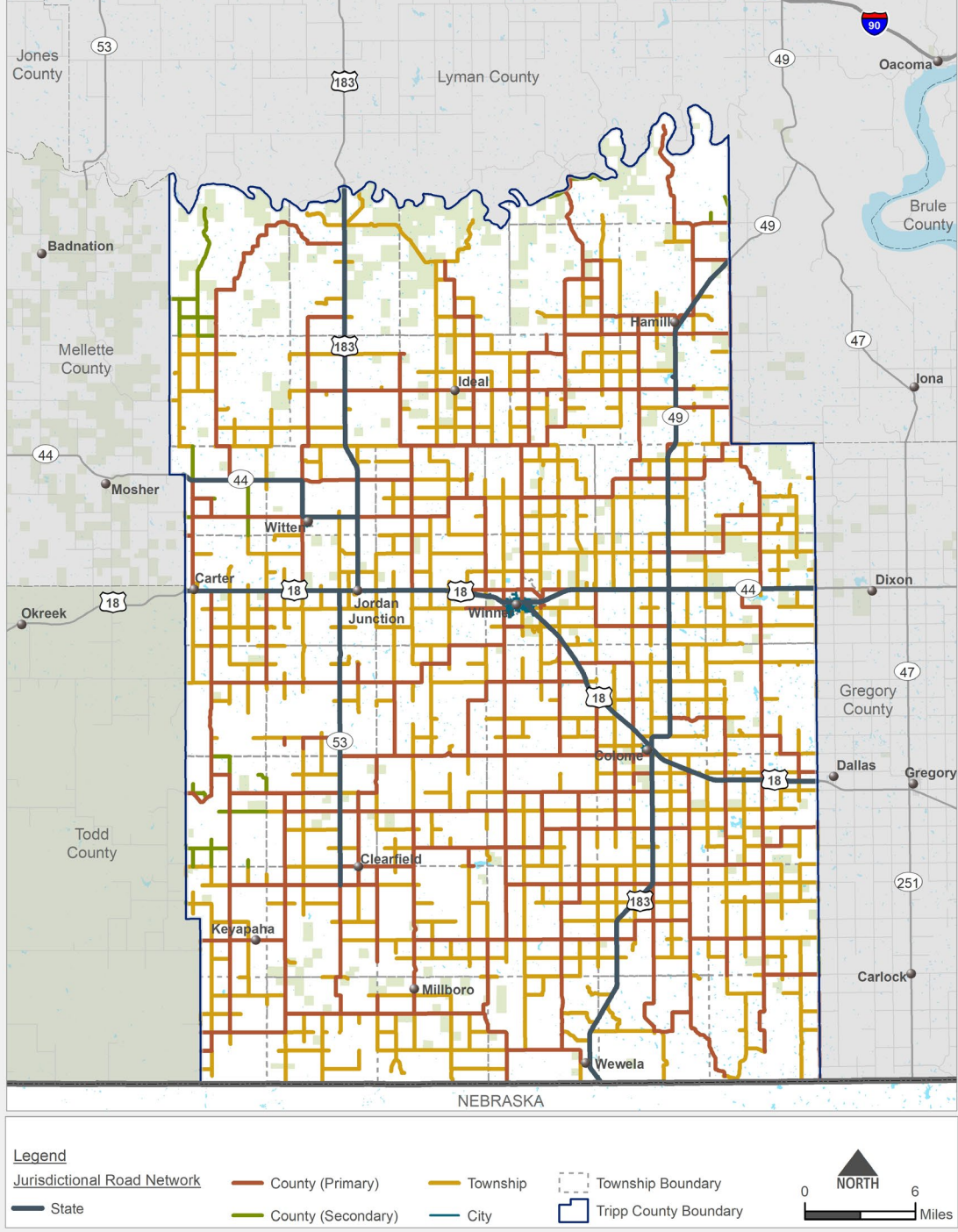


Tripp County MTP

Roadway Jurisdiction

- Jurisdiction assigned to a roadway refers to the entity responsible for planning, construction, & maintenance.
- Tripp County covers approximately 38% of all roads under their jurisdiction, including bridges on those alignments.
- Maintaining 52% of roads at local level creates some challenges for Townships to manage consistently.

Jurisdictional Road Network	Total Lane Miles	Percentage %
State	154	8.2
County (Primary)	669	35.7
County (Secondary)	39	2.1
Township	976	52.1
City	36	1.9

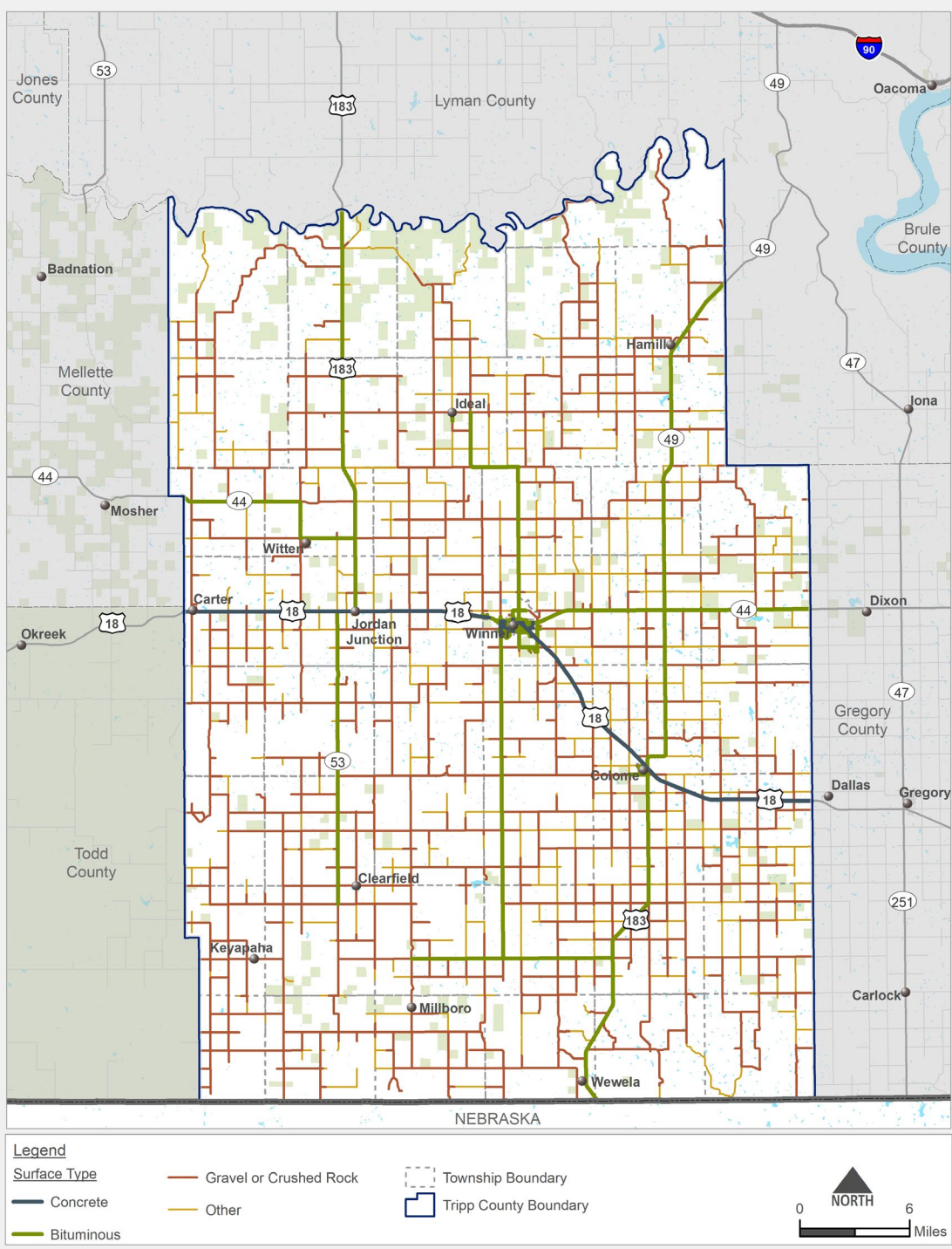


Tripp County MTP Surface Type

- Over 80% of roads in Tripp County are Gravel, Crushed Rock, or Minimum Maintenance (Other).

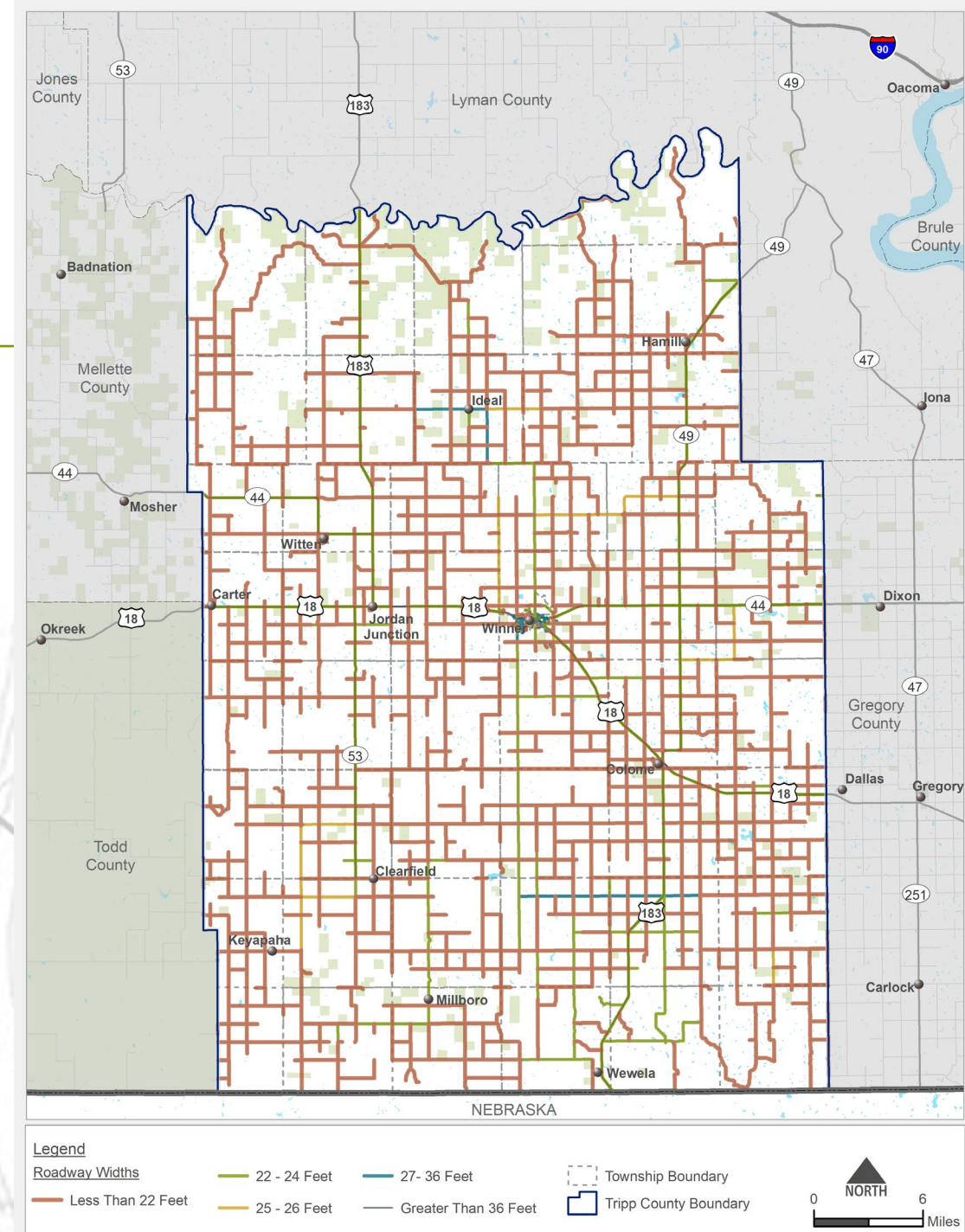


Surface Type	Total Lane Miles	Percentage %
Concrete	41.51	2.2
Bituminous	194.57	10.4
Gravel or Crushed Rock	1,225.72	65.4
Other (Minimum Maint.)	413.04	22.0



Tripp County MTP Roadway Width

- Over 80% of roadways are less than 22 feet wide.
- A Master Transportation Plan will establish standards for roadway width and surfacing based on Functional Classification and State design standards.

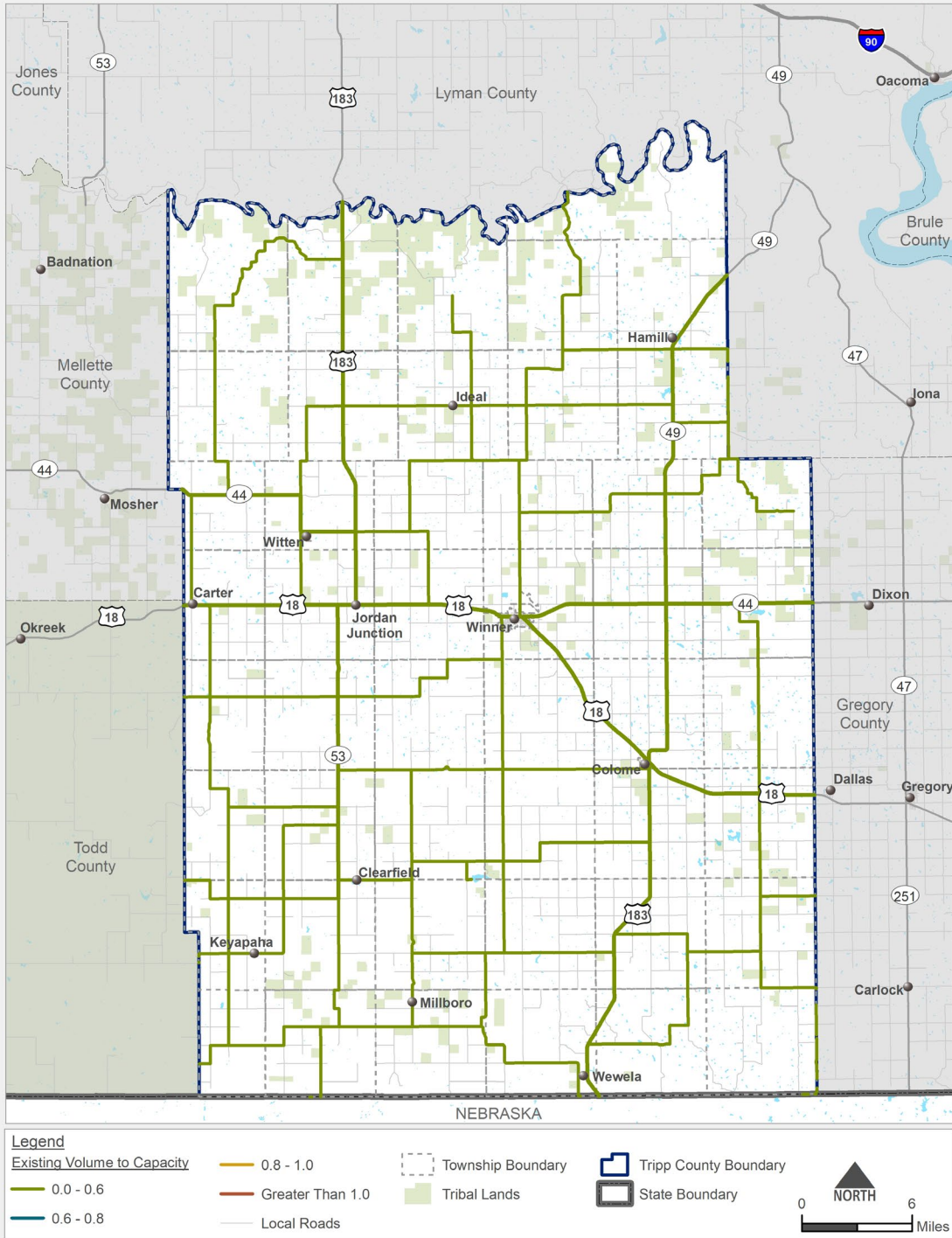


Tripp County MTP

Existing V/C

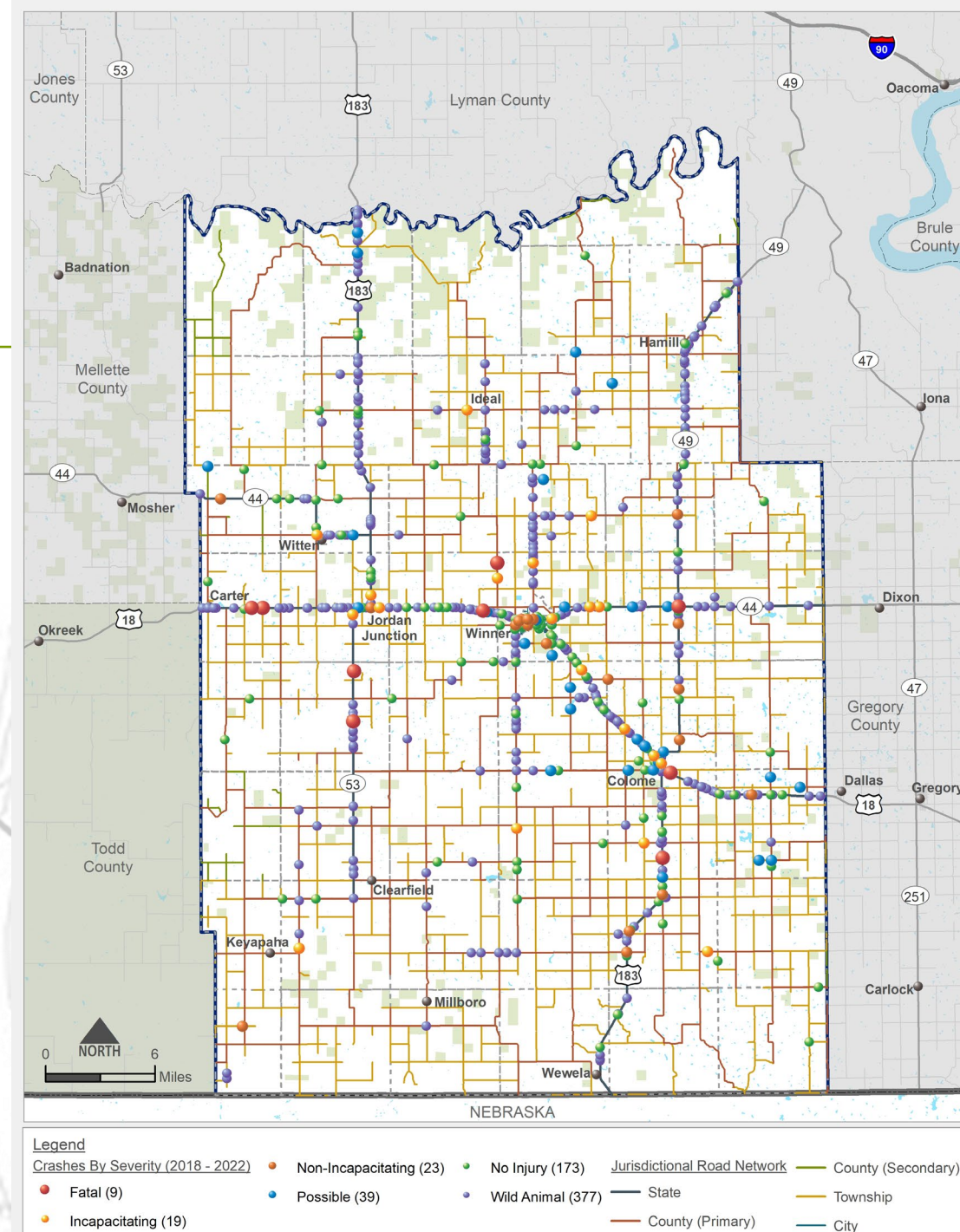
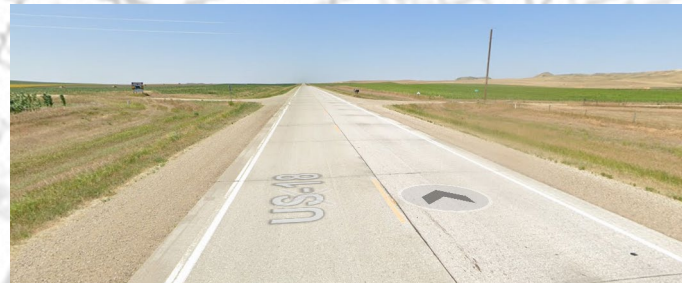
- Each roadway can support a large amount of vehicles before the capacity begins to reach a level that may be considered congesting.
- The number of vehicles estimated as Average Daily Traffic (ADT) to use a corridor is measured against the segment's capacity.
- Congestion is not a significant factor for Tripp County

State Highways (ADT)		County Roads (ADT)		Township/Local Roads (ADT)	
Min	Max	Min	Max	Min	Max
118	9,621	14	421	9	36



Tripp County MTP Crashes

- Total crashes (2018–2022): 640 by severity.
- Nine (9) fatal crashes, mainly on State Highway.
- 59% of crashes caused by wild animals (377 crashes).
- Roads must be constructed and maintained to meet all standards that are safe for designed traveling conditions.



Tripp County MTP NBIS Bridge Condition

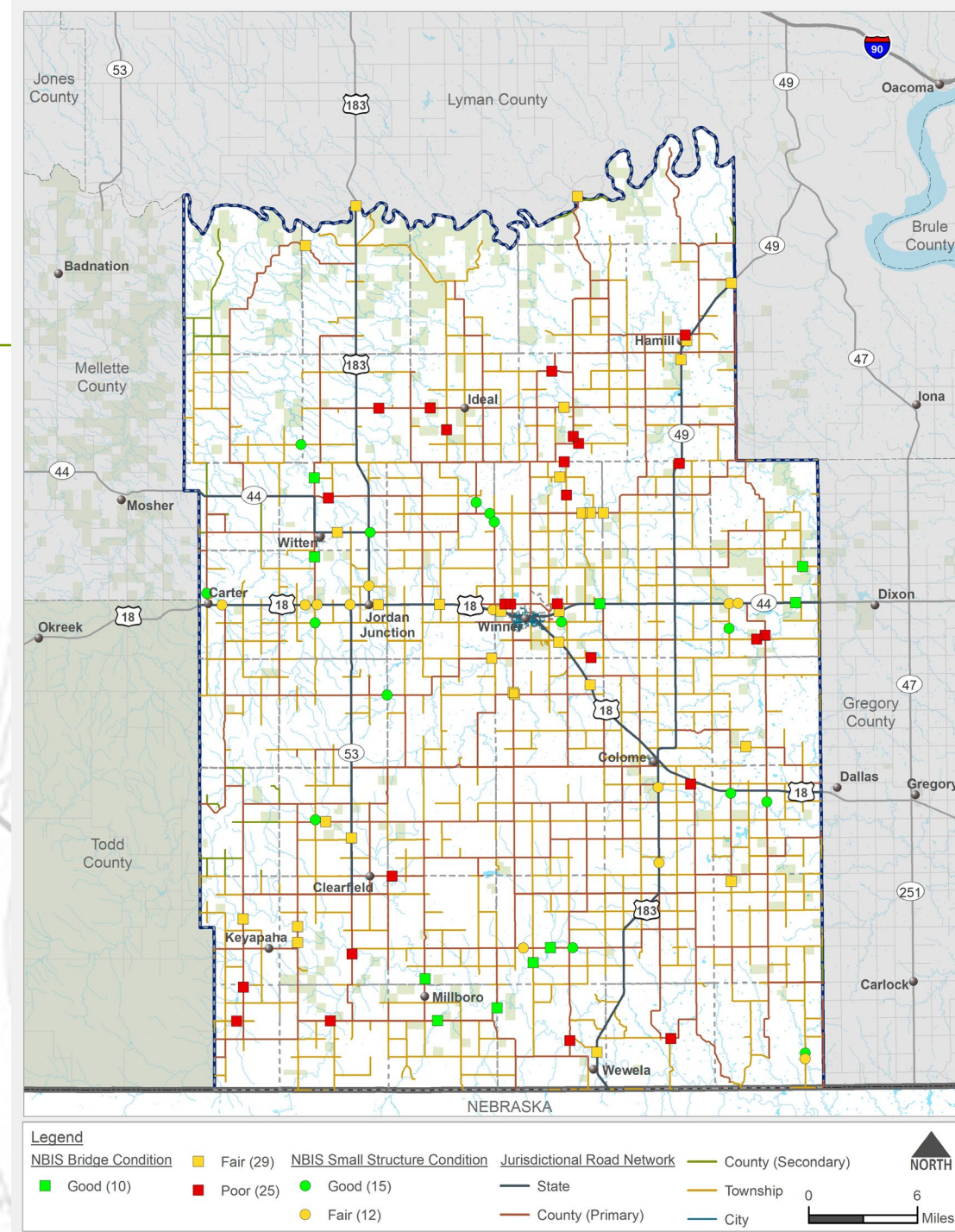
- National Bridge Inspection Standards database includes 91 Bridges and Small Structures
- Two-thirds are NBIS Bridges; almost half rated as Poor
- Cost to design and replace bridges is significant
- Since 2016: 11 Bridges have been funded for Preliminary Engineering, seven (7) for Replacement Design, and six (6) for construction



NBIS Bridge



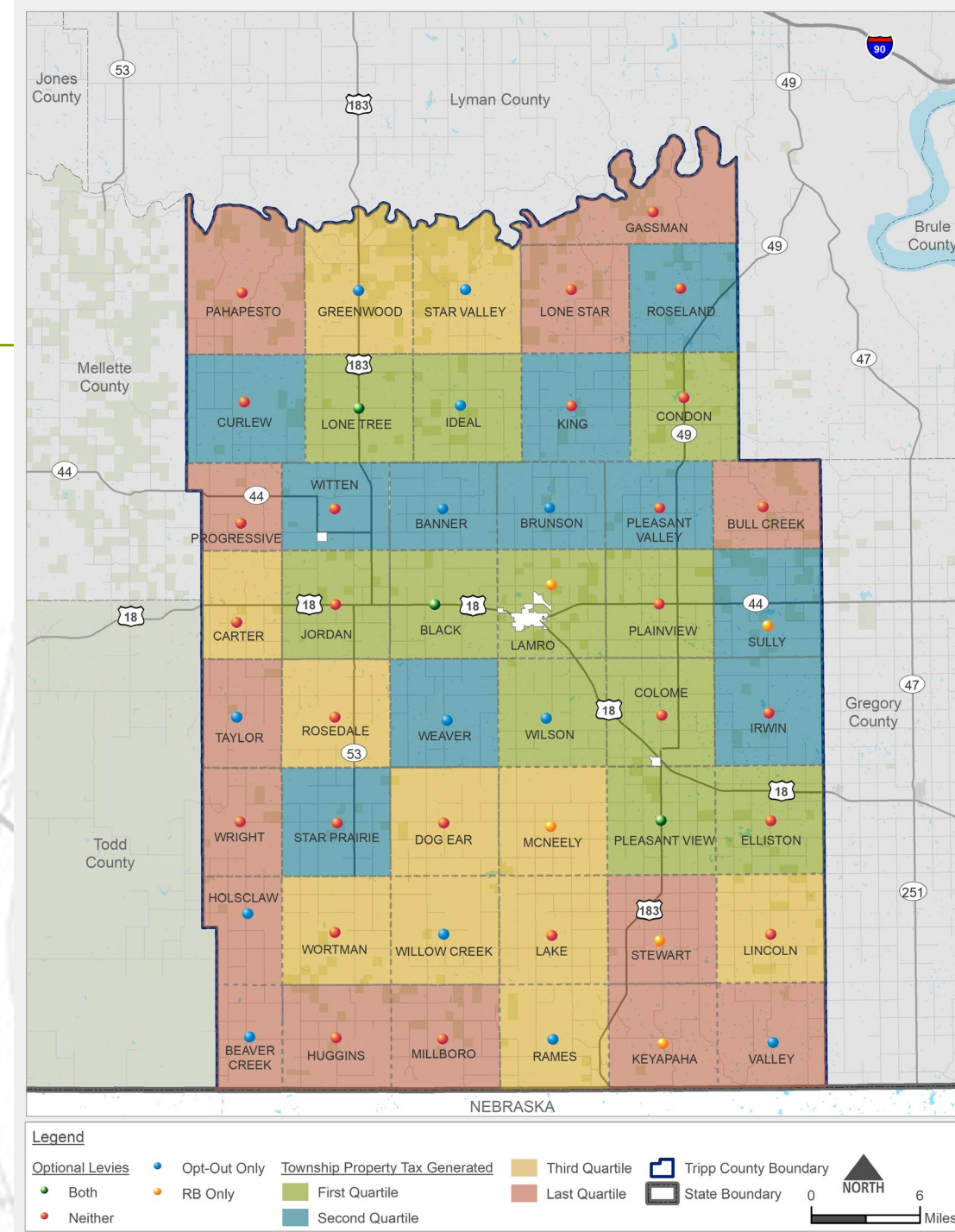
NBIS Small Structure



Tripp County MTP Township Property Tax

- Property taxes provide the County with funds available for road and bridge projects and maintenance
- Increasing property value generates more tax revenue for infrastructure.
- Each Township has a property tax levy and each generates different amounts of funding. Some generate more than \$38,000 annually and half generate less than \$5,500).

Township Property Taxes Generated by Quartile	Tax Generated (Lowest \$)	Tax Generated (Highest \$\$\$)
First (highest) Quartile	\$10,811	\$38,656
Second Quartile	\$5,224	\$9,720
Third Quartile	\$1,145	\$4,995
Fourth (lowest) Quartile	\$0	\$1,120



Study Website

- TrippCountyMTP.com
 - Existing Conditions Figures
 - Survey Questionnaire
 - Comments Form
 - Recorded Presentation
- Survey questionnaire (**Deadline: Tuesday, May 7, 2024.**)
- The website will post project updates as the study continues.
 - Opportunities for review and comment on plan documents

Survey

Tells us about your travel habits and priorities for transportation in Tripp County.

Take Survey

Thank You !

- Next Meeting – Public Meeting #I (April 23, 2024)
- Project Managers
 - SDDOT
 - Katrina Burckhard, SDDOT Project Manager (Katrina.Burckhard@state.sd.us)
 - Consultant Team
 - Jesse Poore, AICP, FHU Consultant Project Manager (Jesse.Poore@fhueng.com)
- TrippCountyMTP.com